







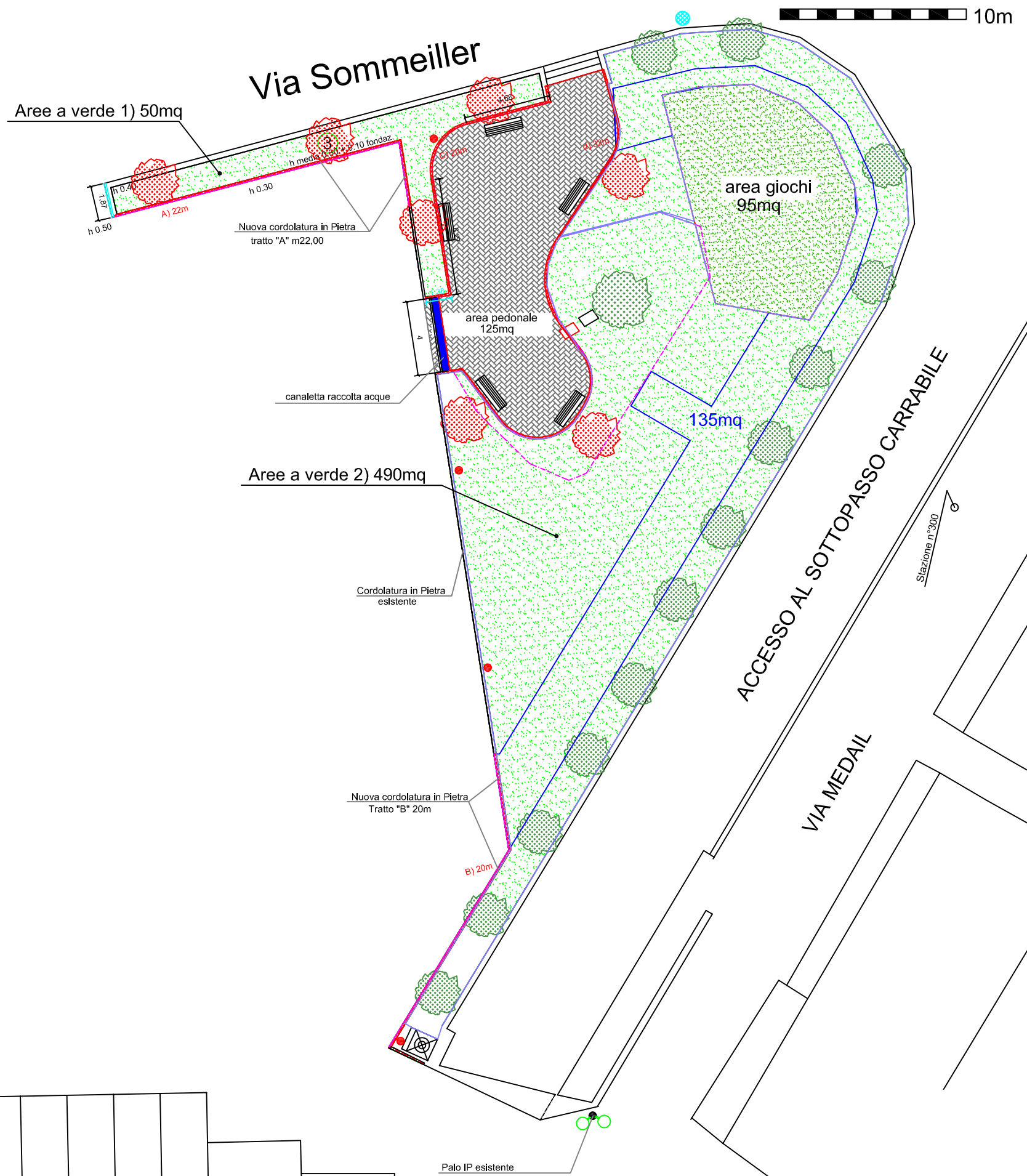


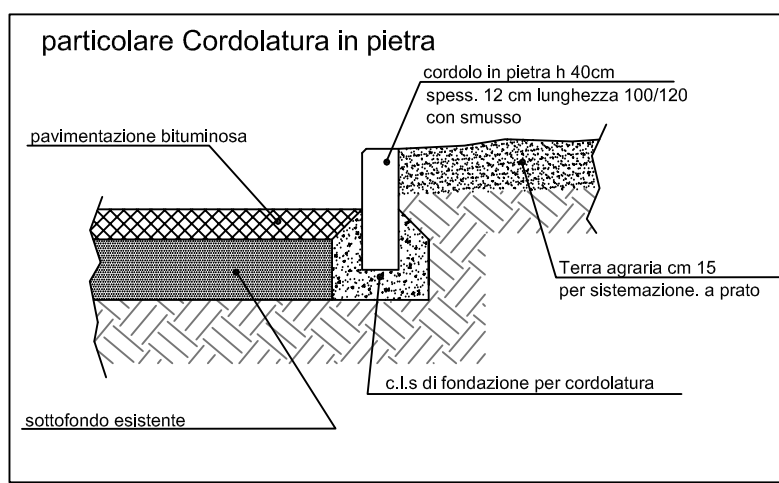
PLANIMETRIA NUOVE OPERE IN PROGETTO

LEGENDA

-  Nuova area giochi con pavimentazione antitrauma - 95mq
-  Nuova cordolatura in pietra - 94 ml
-  Nuova area pedonale con nuova pavimentazione in Marmette autobloccanti mq 125
-  Pali illuminazione pubblica in progetto (3 pali)
-  Nuove alberature (oggetto di altro intervento)
-  Aree con sistemazione a verde (490mq+50mq)
-  Aree ex asfalto da rinverdire
-  Aree ex pedonale da rinverdire



Torre Faro



SUPERFICIE OCCUPATA DALLA G.D.F.

scala 1:250